

# HIOKI

# Easily collect power meter data with the LR8410



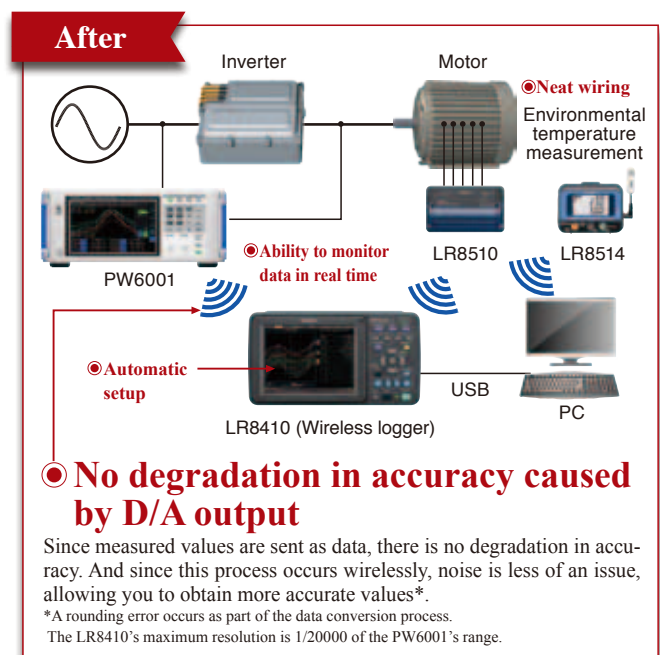
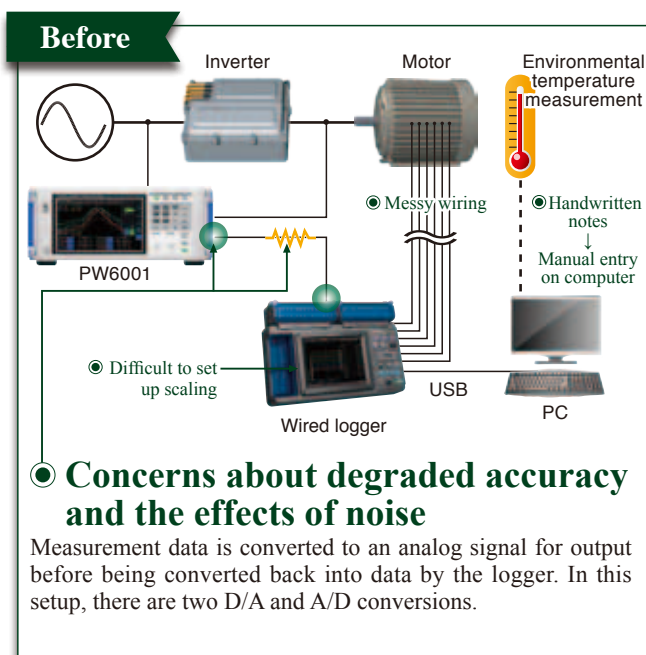
**New function**

## LR8410 Link

Use the Wireless Logging Station LR8410 to collect data from LR8410 Link-compatible products in real time.



WIRELESS LOGGING STATION LR8410-20



Please see [www.hioki.com](http://www.hioki.com) for list of supported regions. Please review the list of countries where the Bluetooth serial adapter is supported prior to use.

## Features

### Easy scaling

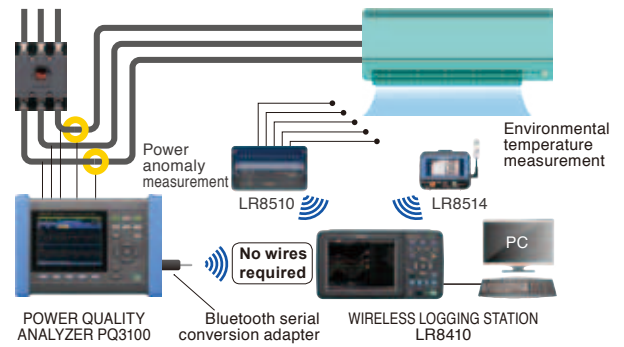
The setup process is simple: just search for and pair LR8410 Link-compatible products. Since the settings on paired devices are automatically received by the LR8410, there's no need to manually configure troublesome scaling settings. And since this process occurs wirelessly, you spend less time on wiring work.

### Simultaneous measurement of power, temperature, and other data

The LR8410 can be used with a broad range of modules and LR8410 Link-compatible products. Since you can pair it with up to seven devices, you can measure a large number of channels and parameters along with power meter data.

In addition, the LR8410 provides other useful functionality such as waveform calculation and alarms.

## Applications



Connect the PQ3100 and the LR8410 via Bluetooth® wireless technology to transmit up to 6 kinds of measured values to the LR8410, letting you record PQ3100 values in addition to other logger data.

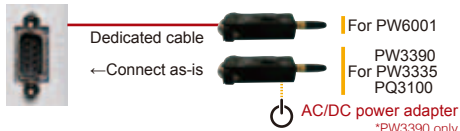
## Pairing LR8410 Link-compatible products -PW6001, PW3390, PW3335, PQ3100-

### 1 Connect a Bluetooth serial adapter to the product.

\*Turn off the product before connecting the adapter.

Connect the adapter to the RS-232C terminal on the LR8410 Link-compatible product

**Bluetooth serial adapter**  
Recommended model: Parani-SD1000



#### Parani-SD1000 setup

Set the DIP switches based on the communication speed of the LR8410 Link-compatible product and turn on the power switch.

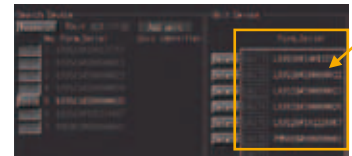
### 2 Configure the LR8410 Link-compatible product's communications settings

Example PW6001 screen



Select "Bluetooth" under the LR8410 Link-compatible product's RS-232C settings, set the communication speed, and choose "Initialize Adapter." Then configure the product's settings as necessary.

### 3 Pair with the LR8410 and start measurement



Pair the LR8410 Link-compatible product with the LR8410 and start measurement. The paired product's settings will be automatically received by the LR8410 after pairing.

## System setup

### Receiver

#### Model WIRELESS LOGGING STATION LR8410



Ver. 1.4 and later

Logging Multi-point Data Has Never Been So Easy with a Wireless Data Logger max. 105 ch

Model No. (Order Code)

**LR8410-20**

The LR8410-20 alone is not capable of making measurements. One or more input modules are necessary to measure. For more detailed information, please refer to the individual product catalogs.

### Measurement unit: Pair up to 7 units (models can be mixed)

#### LR8410 Link-compatible products \*Contact HIOKI for more information.

A Bluetooth serial adapter (purchased separately; recommended model: Parani-SD1000) is required.



Ver. 2.0 and later

#### POWER ANALYZER PW6001

A dedicated connection cable (purchased separately) is required.



#### POWER ANALYZER PW3390

An AC/DC power supply adapter (purchased separately; recommended model: OPA-G01) is required.



Ver. 1.1 and later

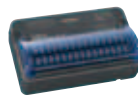
#### POWER METER PW3335

The PW335-01 is not supported.



Ver. 2.0 and later

#### POWER QUALITY ANALYZER PQ3100



15 ch  
Voltage Thermocouples

WIRELESS VOLTAGE/TEMP UNIT LR8510  
2 terminals M-3 mm screw type



15 ch  
Voltage Thermocouples Pt 100, JPt 100 sensor Resistance Humidity

WIRELESS UNIVERSAL UNIT LR8511  
4 terminals push-button type



2 ch  
WIRELESS VOLTAGE/TEMP LOGGER LR8515



2 ch  
WIRELESS HUMIDITY LOGGER LR8514



2 ch  
WIRELESS CLAMP LOGGER LR8513



2 ch  
WIRELESS PULSE LOGGER LR8512



1 ch  
WIRELESS FUNGAL LOGGER LR8520

Note: Company names and Product names appearing in this catalog are trademarks or registered trademarks of various companies.

# HIOKI

HIOKI E. E. CORPORATION

#### HEADQUARTERS

81 Koizumi  
Ueda, Nagano 386-1192 Japan  
www.hioki.com

#### HIOKI USA CORPORATION

TEL +1-609-409-9109 FAX +1-609-409-9108  
hioki@hiokiusa.com / www.hiokiusa.com

HIOKI (Shanghai) SALES & TRADING CO., LTD.  
TEL +86-21-6391-0090/0092 FAX +86-21-6391-0360  
info@hioki.com.cn / www.hioki.cn

HIOKI SINGAPORE PTE. LTD.  
TEL +65-6634-7677 FAX +65-6634-7477  
info-sg@hioki.com.sg / www.hioki.com.sg

HIOKI KOREA CO., LTD.  
TEL +82-2-2183-8847 FAX +82-2-2183-3360  
info-kr@hioki.co.jp / www.hiokikorea.com

HIOKI EUROPE GmbH  
TEL +49-6173-31856-0 FAX +49-6173-31856-25  
hioki@hioki.eu / www.hioki.com

DISTRIBUTED BY